

BEYOND THE MINISTRY

Ontario Education Research Panel (OERP)

- includes nominated individuals who have rich backgrounds in education and research
- promotes research networks and partnerships and shares examples of research-to-practice and practice-led research collaboration
- champions collaborative research to inform education practice


Ontario Education Research Symposium

- brings together researchers, educators, and policy makers from the research and education communities on an annual basis
- gives participants opportunities to build networks and partnerships, gain insights into existing research, identify gaps for future research, and share approaches for connecting research to practice

MISA Professional Network Centres

- established as professional learning communities to complement the efforts of individual school boards to promote regional capacity building in the areas of technology, data management, and data use
- undertake activities that include promoting a healthy data culture through professional development, creating and sharing training tools, establishing links with the research community, and engaging in action research and collective enquiry

Find out more about the Ontario Ministry of Education's Research and Evaluation Strategy at www.edu.gov.on.ca/eng/research or e-mail your ideas to the Chief Research Officer at cro.office@ontario.ca

 Printed on recycled paper

08-310

ISBN 978-1-4249-8872-3 (Print)

ISBN 978-1-4249-8873-0 (HTML)

ISBN 978-1-4249-8874-7 (PDF)

© Queen's Printer for Ontario, 2009

Cette publication est disponible en français.

ONTARIO MINISTRY OF EDUCATION

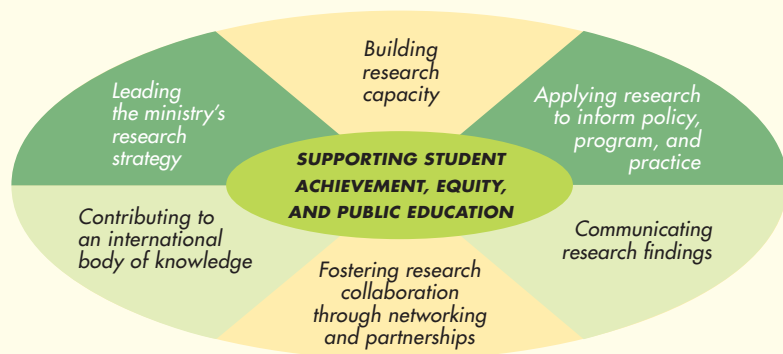
RESEARCH & EVALUATION STRATEGY

The Ontario Ministry of Education is committed to developing and implementing policies, programs, and practices that are evidence-based, research-informed, and connected to provincial education goals.

The Ministry of Education is focusing its research activities on supporting its priority education goals:

- 1 IMPROVED STUDENT ACHIEVEMENT
- 2 REDUCED GAPS IN ACHIEVEMENT
- 3 INCREASED PUBLIC CONFIDENCE IN PUBLIC EDUCATION

The ministry's Research and Evaluation Strategy is a shared strategy designed to be inclusive of staff from across all parts of the ministry and to foster collaboration with partners across the education and research communities. The Research and Evaluation Strategy's purpose is to engage all partners in connecting research/evaluation to policy, program, and practice.



COMPONENTS OF THE RESEARCH AND EVALUATION STRATEGY

The Research and Evaluation Strategy includes the following components:

- ✓ **leading** the ministry's research agenda to coordinate and manage ministry research activities to support provincial education goals;
- ✓ **applying** research and evaluation to support evidence-based policy and program decisions and practices;
- ✓ **building** individual and organizational **capacity** to access, use, and conduct research;
- ✓ fostering research collaboration through **networking and partnerships** between and among ministry staff, and researchers and educators across Ontario, to address priority research needs;
- ✓ **communicating** information about existing and new research activities and findings; and
- ✓ **contributing** to the provincial, national, and international body of research knowledge about educational policies, programs, and practices.

PEOPLE AND INITIATIVES CONNECTED WITH THE STRATEGY INCLUDE:

WITHIN THE MINISTRY

Chief Research Officer (CRO)/Education Research and Evaluation Strategy Branch

- develops and promotes the ministry's Research and Evaluation Strategy
- advances alignment and application of research and evaluation to inform decision-making related to the ministry's priority goals
- advises ministry staff on research and evaluation activities, ensuring research integrity and consistency
- fosters collaboration across the ministry and with partners for a shared commitment to conducting and applying research that will inform education policy, program, and practice
- mobilizes research knowledge, bringing external evidence into the ministry and communicating ministry evidence out to the broader sector

Assistant Deputy Ministers' Committee

- provides research leadership across the ministry
- directs the ministry's research priorities by ensuring vertical, horizontal, and collaborative alignment across the ministry and with other ministries
- promotes the application of research to inform policy directions and practices within the ministry and across the education sector

Ministry Research Coordination Team

- includes staff representatives from across the ministry
- identifies and responds to capacity-building needs within the ministry
- promotes horizontal alignment by developing collaboration and communication about research activities

Evaluation and Research (E+R) Learning Program

- builds capacity among ministry staff to use research and evaluation appropriately and effectively for evidence-based decision making with respect to policies and programs

Policy Research Connections Series

- encourages information-sharing and learning through sessions that develop communication and networks across the ministry about research connected to ministry goals

Research Strategy Speaker Series

- features presentations of latest research by visiting local, national and international education researchers